

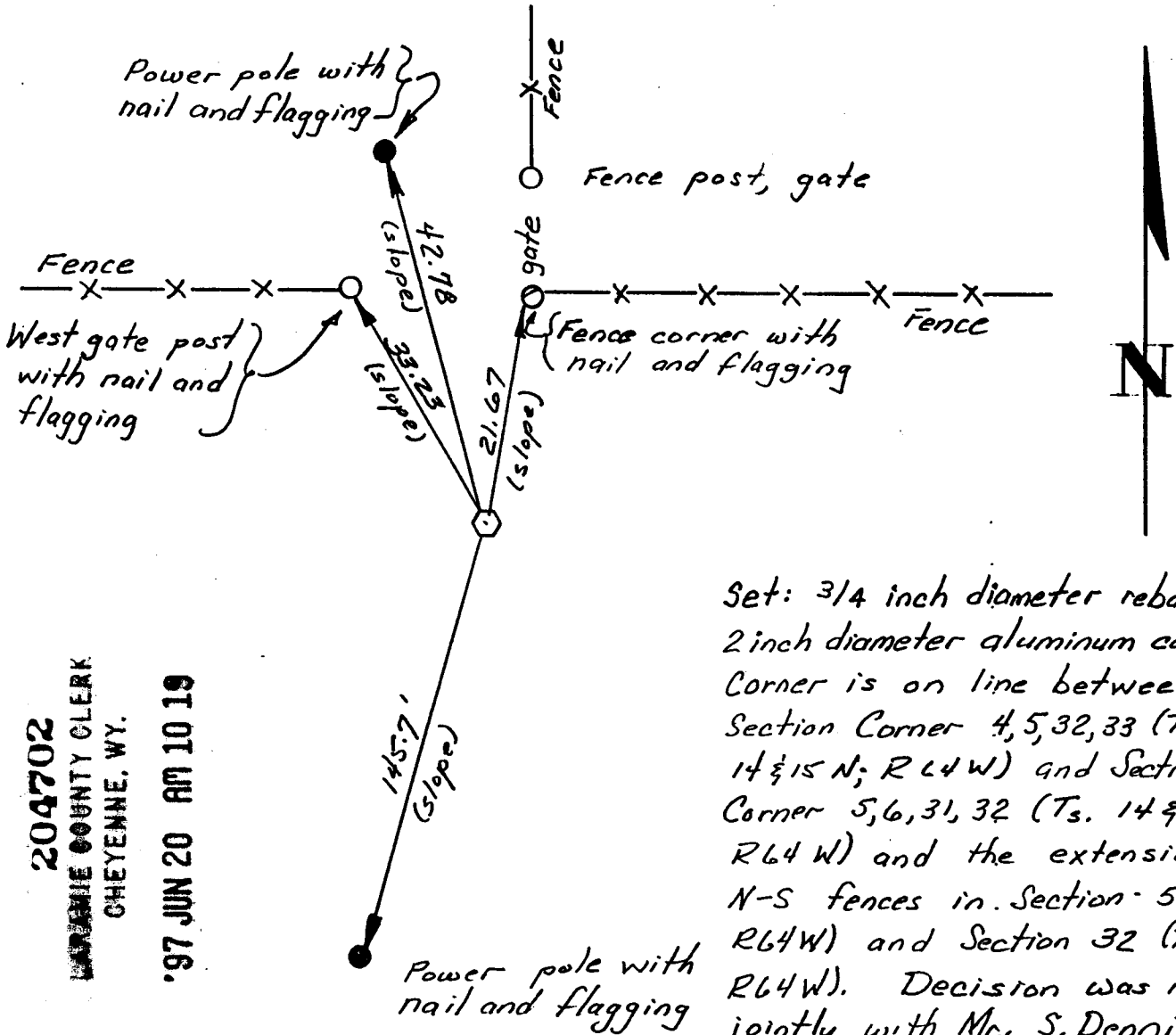
State of Wyoming Corner Record

(In compliance with the CORNER PERPETUATION AND FILING ACT, Wyoming Statutes, 1977, Section 36-11-101, et. seq., and the Rules and Regulations of the Board of Registration for Professional Engineers and Professional Land Surveyors.)

Reverse side of this form may be used if more space is needed.

Record of original survey and citation of source of historical information (if corner is lost or obliterated). Description of corner monumentation evidence found and/or monument and accessories established to perpetuate the location of this corner. Sketch of relative location of monument, accessories, and reference points with course and distance to adjacent corner(s) (if determined in this survey). Method and rationale for reestablishment of lost or obliterated corner.

1/4 Section Corner: Sec. 5; T 14N; R 64W; 6th P.M. and Sec. 32, T 15N; R 64W; 6th P.M.



Set: 3/4 inch diameter rebar with 2 inch diameter aluminum cap. Corner is on line between Section Corner 4, 5, 32, 33 (Ts. 14 & 15 N; R 64 W) and Section Corner 5, 6, 31, 32 (Ts. 14 & 15 N; R 64 W) and the extension of N-S fences in Section 5 (T 14N; R 64W) and Section 32 (T 15N; R 64W). Decision was made jointly with Mr. S. Dennis Dawson, PLS 555.

204702
LARAMIE COUNTY CLERK
CHEYENNE, WY.

'97 JUN 20 AM 10 19

Date of Field Work: 20 April 1997 Office Reference: _____

CROSS INDEX DIAGRAM

A	1	2	3	4	5	6	7	8	9	10	11	12	13	14	15	16	17	18	19	20	21	22	23	24	25	26
B																										
C	6		5		4		3		2		1															
D																										
E																										
F																										
G	7		6		5		4		3		2															
H																										
I																										
J																										
K																										
L	18		17		16		15		14		13															
M																										
N																										
O																										
P	19		20		21		22		23		24															
Q																										
R																										
S																										
T	30		29		28		27		26		25															
U																										
V																										
W																										
X	31		32		33		34		35		36															
Y																										
Z																										

Firm/Agency, Address

PREPARED BY:

Dr. Herbert W. Stoughton
Geodetic Engineer
2821 Carey Avenue
Cheyenne, Wyoming 82001
(307) 632-7460

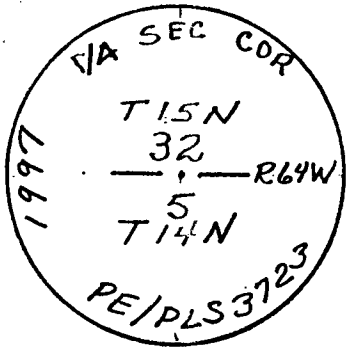
This corner record was prepared by me or under my direction and supervision.

SEAL & SIGNATURE

Herbert W. Stoughton
20 June 1997

Corner Name: Not Applicable Section: 5 T 14N R 64W 6th P.M. Cross-Index No.: 2-7

SBRPEPLS/PLSW: March 1994 (CLCR_SJA)



stamping

01 01 19 03 10 10

01 01 19 03 10 10

